

Design your office for the highest acoustic comfort and achieve top productivity

Nine Steps to follow for achieving acoustical comfort. The steps are broken down into three groups Behavior, Design and Acoustical Treatment.

1. **Speech Privacy** - We identify the necessary levels of privacy required for each work group and layout based on most efficient configurations.
2. **Behavioral Expectations**- We assist with the development of expected protocols of the departments. This is geared to assist in the reduction of distractions and best use of existing space.
3. **Design Adaptation** - We recommend new plan changes based on ideal configuration and report results.
4. **Laying out Zones**-Taking the work patterns into consideration. This is the step that groups likely areas of the business together for proper functionality and setting physical and space barriers between opposing areas.
5. **Spatial layout** - This stage is taking all the compiled details that have been gathered by Apex Executive Interiors to create a space that gives ideal distances between work areas from supporting activities such as photocopy areas, kitchen space, conference room and training entry areas where potential queues could be expected.
6. **Selection of Furniture** - By utilising our detailed research we can recommend the most appropriate selections based on sound comfort, layout efficiency and lastly budget requirements.
7. **Sound Absorbing Components** - The use of specially designed ceilings, walls and surrounding surfaces are introduced and critical areas of the fit out to leverage best possible sound mitigation to your new offices.
8. **Sound Masking in the office** - The process of introducing ambient noise in designated areas to create speech privacy.

How does your office rate in Noise and Acoustical Comfort?

We discover there has not been sufficient consideration given to acoustical comfort in many offices. Apex Executive Interiors Acoustical Summary Report will tell you exactly where you rate.

Call us to arrange a time for a report to be done on your office.

9. **Dividers/Screens** that are engineered and fabricated to minimise and isolate sound in designated areas. i.e. areas where private information is being shared such as conference facilities, executive offices and accounting department to list a few.

Part of every fitout includes considering the required levels of balance of concentration and required interaction between each work group of the organisation. Please call our offices to inquire how we may be able to assist you on your upcoming fit out.

Completed Work

Apex Executive Interiors is proud to announce the new headquarters for **Alphinity Investment Managers** in the heart of Sydney's CBD. Our client had grown out of their prior offices a few blocks away from their new location, 179 Elizabeth Street. They tasked us with a number of items that were an absolute on their list. The new space had to comfortably serve the partners office requirements as well as make them feel they had informal breakout areas with a "lounge feel" for times that did not require the formality of the boardroom. The new facilities had to handle their extensive training program they have for their clients. Please check our website for the full Case Study.



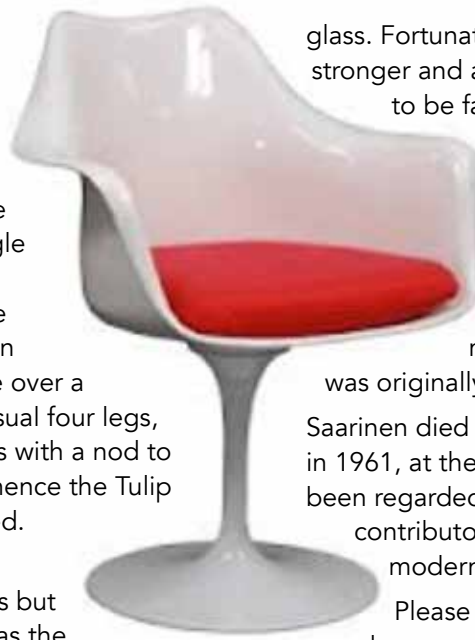
Snapshot of a Top Designer - Eero Saarinen

We thought it might be interesting if we take a few of the well known furniture designer and share a brief summary of their work. We start with one of the classic modernists of century - Eero Saarinen.

Eero Saarinen was born in Finland in 1910. Eero had originally taken sculpture as his original choice for the arts. Shortly after, he followed in his father's footsteps to be an architect creating some of the most memorable and revered piece of architecture of his time. Eventually by sheer necessity he began creating furniture that he believed best suited his structures.

Most of us at some time been exposed to a Saarinen reproduction. One of his most well-known is the Tulip Pedestal Chair, in its original design it was made of a cast aluminum pedestal base, supporting a molded

fiber glass reinforced plastic seat shell, it is intended at first glance to be molded in a single piece. Saarinen wanted to create a furniture design that did not take over a room with the usual four legs, he perfected this with a nod to mother nature, hence the Tulip Chair was created. He tried to use organic materials but was not able to as the fiber glass at that time was not strong enough to hold the chair weight, the solution - an aluminum base which was covered with fiber



glass. Fortunately, today plastics are stronger and allows for the piece to be fabricated without the aluminum frame used in his original pieces. This allows for entire form of the chairs, stools and tables to be made in one piece as it was originally intended.

Saarinen died in Ann Arbor, Michigan in 1961, at the age of 51. He has been regarded as one of the primary contributors to modernism era in modern day design.

Please let us know this might be something you would like to see in upcoming issues about additional furniture designers that we see in our daily lives. We welcome your input.

Do we need to worry about disabled access?

The latest revision of Australian Standard AS 1428.1-2009 (Design for access and mobility) has been a mandatory since early last year and is very specific in its requirements.

Below I have listed some of the more basic items that absolutely have to be considered at the design stage of any office fit out.

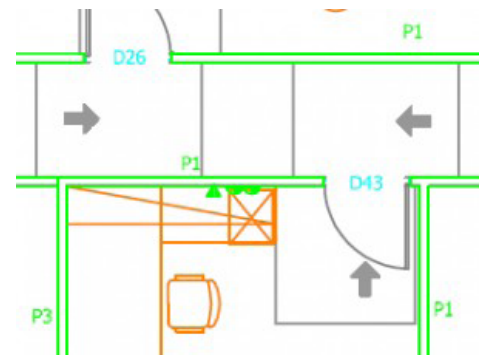
1. Circulation space around doors. Depending on the approach direction of any door way there is an "exclusion zone" which must be kept clear. This has lead to much wider corridors and entrances than most people believe is required.
2. Door colour, you can no longer have you door the same colour as your wall, there has to be a 30% luminance contrast difference between the wall and the door. Believe it or not even the toilet seat has to have a 30% luminance contrast to the background. This is to assist people who are visually impaired.

3. Passing spaces are required when corridors exceed a set distance, and corners of corridors need to have enough room to allow for a wheel chair to turn in them with out doing a 3 point turn. The exact dimensions are in AS 1428.1-2009, I wont list them here as they are prone to change.

4. Reception design, what do you do when someone in a wheel chair comes into your reception area. Do you have an area for them to wait in that is not the hall way? Do you have a way to talk to them from the reception counter that doesn't mean you have to lean over the hob and speak down to them? Consider how you would like to be treated if you were in their situation.

So that's just a few of the many considerations that we put into our office fit out designs. Sydney offices can be challenging due to the age and we are up to the challenge.

The answer is of course YES!



Next issue:

Collaborative Workspace and how to incorporate it effectively.

